

Please check the examination details below before entering your candidate information

Candidate surname

Other names

Pearson Edexcel
International
Advanced Level

Centre Number

--	--	--	--	--

Candidate Number

--	--	--	--

Sample Assessment Materials for first teaching September 2018

(Time: 1 hour 30 minutes)

Paper Reference **WMA13/01**

Mathematics
International Advanced Level
Pure Mathematics P3

You must have:

Mathematical Formulae and Statistical Tables, calculator

Total Marks

Candidates may use any calculator permitted by Pearson regulations. Calculators must not have the facility for symbolic algebra manipulation, differentiation and integration, or have retrievable mathematical formulae stored in them.

Instructions

- Use **black** ink or ball-point pen.
- If pencil is used for diagrams/sketches/graphs it must be dark (HB or B).
- **Fill in the boxes** at the top of this page with your name, centre number and candidate number.
- Answer **all** questions and ensure that your answers to parts of questions are clearly labelled.
- Answer the questions in the spaces provided
– *there may be more space than you need.*
- You should show sufficient working to make your methods clear. Answers without working may not gain full credit.
- Inexact answers should be given to three significant figures unless otherwise stated.

Information

- A booklet 'Mathematical Formulae and Statistical Tables' is provided.
- There are 10 questions in this question paper. The total mark for this paper is 75.
- The marks for **each** question are shown in brackets
– *use this as a guide as to how much time to spend on each question.*

Advice

- Read each question carefully before you start to answer it.
- Try to answer every question.
- Check your answers if you have time at the end.
- If you change your mind about an answer, cross it out and put your new answer and any working underneath.

Turn over ►

S59757A

©2018 Pearson Education Ltd.

1/1/1/



Pearson

Leave
blank

Answer ALL questions. Write your answers in the spaces provided.

1. Express

$$\frac{6x + 4}{9x^2 - 4} - \frac{2}{3x + 1}$$

as a single fraction in its simplest form.

(4)

DO NOT WRITE IN THIS AREA

DO NOT WRITE IN THIS AREA

DO NOT WRITE IN THIS AREA

2.

$$f(x) = x^3 + 3x^2 + 4x - 12$$

- (a) Show that the equation $f(x) = 0$ can be written as

$$x = \sqrt{\left(\frac{4(3-x)}{3+x}\right)} \quad x \neq -3 \quad (3)$$

The equation $x^3 + 3x^2 + 4x - 12 = 0$ has a single root which is between 1 and 2

- (b) Use the iteration formula

$$x_{n+1} = \sqrt{\left(\frac{4(3-x_n)}{3+x_n}\right)} \quad n \geq 0$$

with $x_0 = 1$ to find, to 2 decimal places, the value of x_1, x_2 and x_3 (3)

The root of $f(x) = 0$ is α .

- (c) By choosing a suitable interval, prove that $\alpha = 1.272$ to 3 decimal places. (2)

DO NOT WRITE IN THIS AREA

DO NOT WRITE IN THIS AREA

DO NOT WRITE IN THIS AREA

Leave blank

Question 2 continued

Lined area for the answer to Question 2 continued.

DO NOT WRITE IN THIS AREA

DO NOT WRITE IN THIS AREA

DO NOT WRITE IN THIS AREA

3.

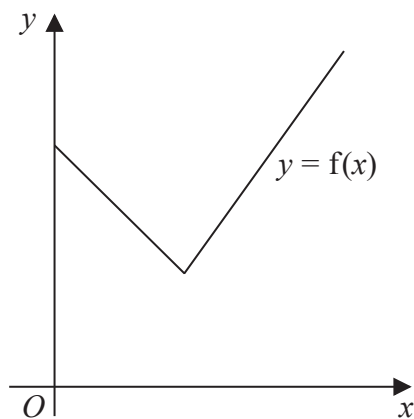


Figure 1

Figure 1 shows a sketch of part of the graph $y = f(x)$ where

$$f(x) = 2|3 - x| + 5 \quad x \geq 0$$

(a) Solve the equation

$$f(x) = \frac{1}{2}x + 30 \tag{3}$$

Given that the equation $f(x) = k$, where k is a constant, has two distinct roots,

(b) state the set of possible values for k . (2)

Leave
blank

Question 4 continued

A large rectangular area containing 32 horizontal lines for writing, starting from the line below the 'Question 4 continued' header and ending at the line above the footer.

DO NOT WRITE IN THIS AREA

DO NOT WRITE IN THIS AREA

DO NOT WRITE IN THIS AREA

Leave
blank

Question 4 continued

DO NOT WRITE IN THIS AREA

DO NOT WRITE IN THIS AREA

DO NOT WRITE IN THIS AREA

Q4

(Total for Question 4 is 7 marks)

Leave
blank

5. Given that

$$y = \frac{5x^2 - 10x + 9}{(x - 1)^2} \quad x \neq 1$$

show that $\frac{dy}{dx} = \frac{k}{(x - 1)^3}$, where k is a constant to be found.

(6)

DO NOT WRITE IN THIS AREA

DO NOT WRITE IN THIS AREA

DO NOT WRITE IN THIS AREA

6. The functions f and g are defined by

$$f: x \mapsto e^x + 2 \quad x \in \mathbb{R}$$

$$g: x \mapsto \ln x \quad x > 0$$

- (a) State the range of f . (1)
- (b) Find $fg(x)$, giving your answer in its simplest form. (2)
- (c) Find the exact value of x for which $f(2x + 3) = 6$ (4)
- (d) Find f^{-1} stating its domain. (3)
- (e) On the same axes sketch the curves with equation $y = f(x)$ and $y = f^{-1}(x)$, giving the coordinates of all the points where the curves cross the axes. (4)

DO NOT WRITE IN THIS AREA

DO NOT WRITE IN THIS AREA

DO NOT WRITE IN THIS AREA

DO NOT WRITE IN THIS AREA
DO NOT WRITE IN THIS AREA
DO NOT WRITE IN THIS AREA

Leave blank

Question 6 continued

Lined area for student response, consisting of 25 horizontal lines.

Q6

(Total for Question 6 is 14 marks)

Question 7 continued

DO NOT WRITE IN THIS AREA

DO NOT WRITE IN THIS AREA

DO NOT WRITE IN THIS AREA

Leave blank

8. In a controlled experiment, the number of microbes, N , present in a culture T days after the start of the experiment were counted.

N and T are expected to satisfy a relationship of the form

$$N = aT^b \quad \text{where } a \text{ and } b \text{ are constants}$$

- (a) Show that this relationship can be expressed in the form

$$\log_{10} N = m \log_{10} T + c$$

giving m and c in terms of the constants a and/or b .

(2)

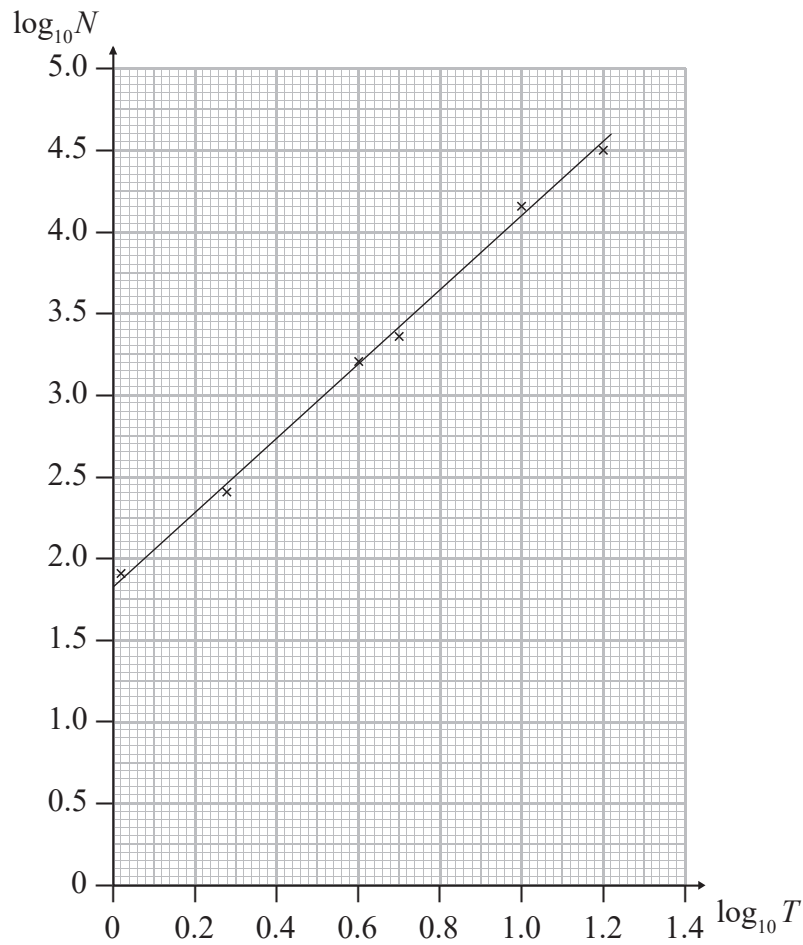


Figure 2

Figure 2 shows the line of best fit for values of $\log_{10} N$ plotted against values of $\log_{10} T$

- (b) Use the information provided to estimate the number of microbes present in the culture 3 days after the start of the experiment.

(4)

- (c) With reference to the model, interpret the value of the constant a .

(1)

DO NOT WRITE IN THIS AREA

DO NOT WRITE IN THIS AREA

DO NOT WRITE IN THIS AREA

Leave
blank

Question 8 continued

Lined area for writing the answer to Question 8.

DO NOT WRITE IN THIS AREA

DO NOT WRITE IN THIS AREA

DO NOT WRITE IN THIS AREA

Leave blank

9. (a) Prove that

$$\sec 2A + \tan 2A \equiv \frac{\cos A + \sin A}{\cos A - \sin A} \quad A \neq \frac{(2n+1)\pi}{4} \quad n \in \mathbb{Z} \quad (5)$$

(b) Hence solve, for $0 \leq \theta < 2\pi$

$$\sec 2\theta + \tan 2\theta = \frac{1}{2}$$

Give your answers to 3 decimal places.

(4)

DO NOT WRITE IN THIS AREA

DO NOT WRITE IN THIS AREA

DO NOT WRITE IN THIS AREA

Leave blank

Question 9 continued

A series of horizontal lines for writing, starting below the section header and extending almost to the bottom of the page. There are approximately 33 lines in total.

DO NOT WRITE IN THIS AREA

DO NOT WRITE IN THIS AREA

DO NOT WRITE IN THIS AREA

Leave blank

Question 9 continued

(Total for Question 9 is 9 marks)

Q9

DO NOT WRITE IN THIS AREA

DO NOT WRITE IN THIS AREA

DO NOT WRITE IN THIS AREA

10. The amount of an antibiotic in the bloodstream, from a given dose, is modelled by the formula

$$x = De^{-0.2t}$$

where x is the amount of the antibiotic in the bloodstream in milligrams, D is the dose given in milligrams and t is the time in hours after the antibiotic has been given.

A first dose of 15 mg of the antibiotic is given.

- (a) Use the model to find the amount of the antibiotic in the bloodstream 4 hours after the dose is given. Give your answer in mg to 3 decimal places. (2)

A second dose of 15 mg is given 5 hours after the first dose has been given. Using the same model for the second dose,

- (b) show that the total amount of the antibiotic in the bloodstream 2 hours after the second dose is given is 13.754 mg to 3 decimal places. (2)

No more doses of the antibiotic are given. At time T hours after the second dose is given, the total amount of the antibiotic in the bloodstream is 7.5 mg.

- (c) Show that $T = a \ln\left(b + \frac{b}{e}\right)$, where a and b are integers to be determined. (4)
-
-
-
-
-
-
-
-
-
-
-
-
-
-
-
-
-
-
-
-
-
-

DO NOT WRITE IN THIS AREA

DO NOT WRITE IN THIS AREA

DO NOT WRITE IN THIS AREA

